

Change or Cancel Delivery (samples) - Description

This workflow is a part of the "Order to Shipment" workflow. What you see in the "Change or cancel delivery - samples" is the process flow on how various customer master data is changed in SAP and involved stakeholders.

The following Business Area's are involved in the "Change or cancel delivery - samples"

- Supply Operations

In the "Change or cancel delivery - samples" there are the following Functional Groups

- Supply Chain Operations

The "Change or cancel delivery - samples" have the following Functions involved in their flow:

- SCO Bagsværd
- GCC – Samples

If you have any questions, comments, changes or need to interact with the accountable of the "Change or cancel delivery - samples", these are the responsible (Novozymes contact acronyms are applied):

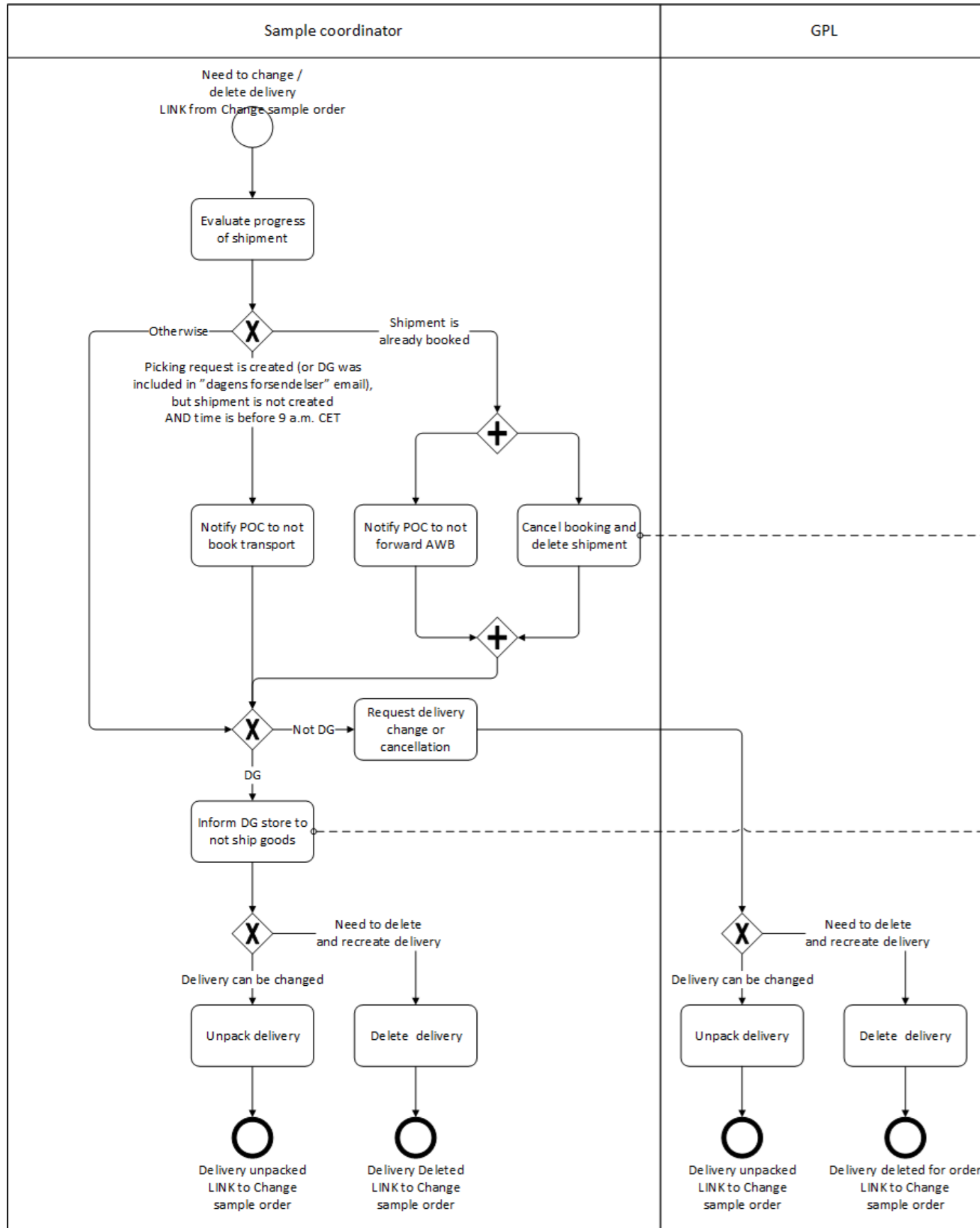
- AFC
- SJKU

The Resource/Role involved in the "Change or cancel delivery - samples", are:

- GPL
- Dangerous Goods
- Forwarder
- GCC - Samples

The combined information of the "Change or cancel delivery - samples" is the following:

Flow Task/Process	Business Area	Functional Group	Function	Responsible	Role
Change or cancel delivery (Sample)	Supply Operations	Supply Chain Operation	SCO Bagsværd	AFC	GPL
Change or cancel delivery (Sample)	Supply Operations	Supply Chain Operation	SCO Bagsværd	AFC	Dangerous Goods
Change or cancel delivery (Sample)	Supply Operations	Supply Chain Operation	SCO Bagsværd	AFC	Forwarder
Change or cancel delivery (Sample)	Supply Operations	Supply Chain Operation	GCC - Samples	SJKU	GCC - Samples



Note: Changes to delivery in some (few) cases are caused by stock inaccuracy, where GPL informs that a delivery must be changed because stock intended for delivery is not found. Will require impact evaluation for customer and contact to customer, as well as delivery cancellation and order unconfirmation

Not mapped as it is a rare case.

