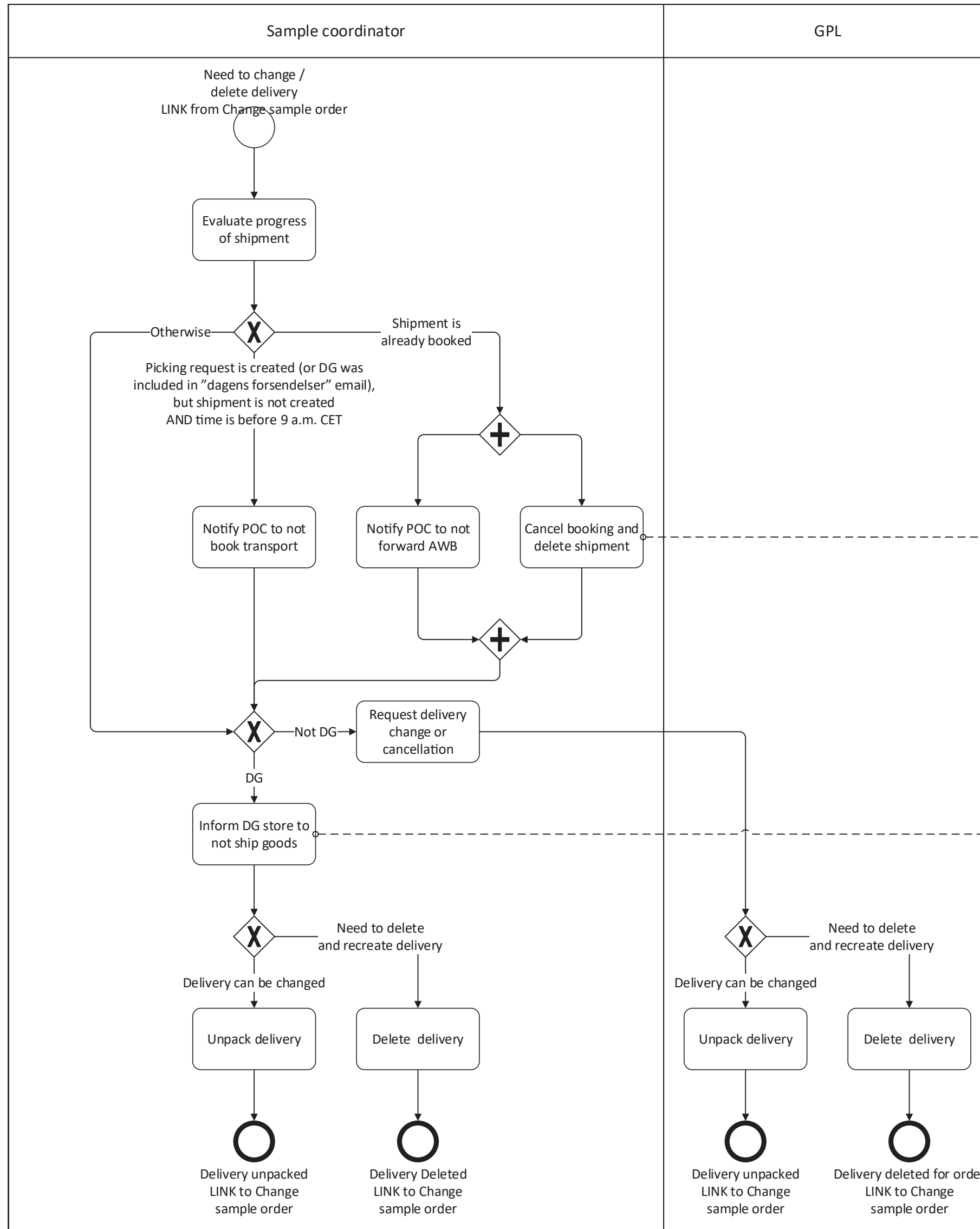


Change or Cancel Delivery (samples) Flow

Filename: Change or cancel delivery - samples.pdf



Note: Changes to delivery in some (few) cases are caused by stock inaccuracy, where GPL informs that a delivery must be changed because stock intended for delivery is not found. Will require impact evaluation for customer and contact to customer, as well as delivery cancellation and order unconfirmation

Not mapped as it is a rare case.